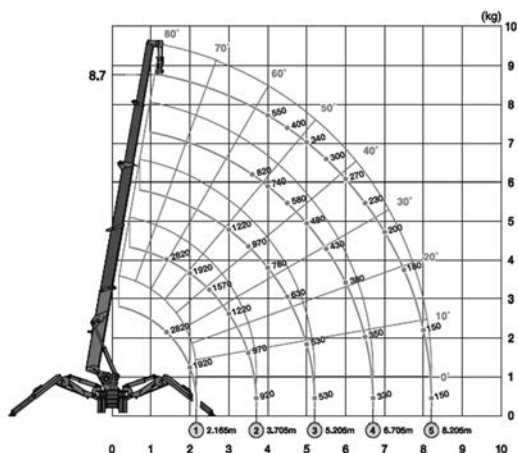


## Mini-Grúas sobre Oruaa

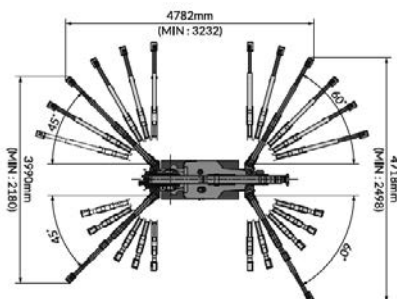


Altura  
trabajo  
**16,00 m**

Altura trabajo	8,70 m
Capacidad plataforma	2,82 t x 1,40 m
Radio de trabajo	8,20 m x 150 Kg
Longitud	3,28 m
Anchura	0,75 m
Altura	1,47 m
Peso	Eléctrica 1.990 Kg / 2.160 Kg

NOTA: las dimensiones de algunas unidades de este modelo pueden variar.

Equipo





# MAEDA MC285 CRM(E) Mini Crane

## Specifications

Capacity	Maximum	2.82 t x 1.4m
Working Radius	Maximum	8.205m x 150kg
Lifting Height	Maximum	8.7m x 550kg
Dimensions	MC285 CRM MC285 CRME	2715mm x 750mm x 1440mm 3285mm x 750mm x 1440mm
Weight	MC285 CRM MC285 CRME	1770kg 1950kg
Hook Speed	Maximum	8m / min. (4 falls, 3rd layer)
Single Line Speed	Maximum	32m / min. (3rd layer)
Hoist Rope	Type	IWRC 6 x Fi (29) Ø 7mm x 48m
Telescopic System	Boom length Telescoping speed Boom type	2.535m - 8.575m 6.04m / 22 sec. Fully automatic 5 section pentagonal telescopic boom
Boom Hoist System	Hoist angle / speed	0° - 80° / 14 sec.
Slew System	Slew angle / speed	360° continuous / 1.0 rpm
Outrigger System	Type Maximum extended dimensions	4 Multi position box type. Hydraulic cylinders with lock valves. (Length) 4580mm x (Front) 4530mm x (Rear) 3810mm
Traction System	Drive Travel speed Gradability Ground length x width Ground pressure	Hydrostatic type, stepless forward and reverse 0 - 2.2 km/h 20° 975mm x 200mm (Track dimensions) 0.45 kgf / cm <sup>2</sup> (0.50 kgf / cm <sup>2</sup> CRME)
Engine	Model Type Rated output Starting method Fuel tank capacity	Yanmar 2TNE68-MB 2 cylinder water cooled diesel 6.57 Kw / 2600 rpm Electric Diesel / 12L
Electric Motor (Optional)	Type Size	Fully enclosed fan cooled motor 5.5 Kw 4P 380V
Standard Equipment	Working light, hour-meter, 4-fall hook block, black rubber tracks, moment limiter, hydraulic safety valves, level, wire rope latch, machine body inclination alarm, EMO switch, working status lamp, overwind protection and cable remote control.	
Optional Equipment	White rubber tracks, single fall hook, two fall hook, searcher hook and radio remote control.	

## Total rated load Outriggers at Maximum position

2.53m/4.075m boom		5.575m boom		7.075m boom		8.575m boom	
Working radius (m)	Total rated load (kg)	Working radius (m)	Total rated load (kg)	Working radius (m)	Total rated load (kg)	Working radius (m)	Total rated load (kg)
< 1.4	2820	< 3.0	1220	< 3.6	820	< 4.0	550
1.5	2520	3.5	970	4.0	740	4.5	400
2.0	1920	4.0	780	4.5	580	5.0	340
2.5	1570	4.5	630	5.0	480	5.5	300
3.0	1220	5.0	530	5.5	430	6.0	270
3.5	970	5.205	530	6.0	380	6.5	230
3.705	920			6.5	350	7.0	200
				6.705	330	7.5	180
						8.0	150
						8.205	150

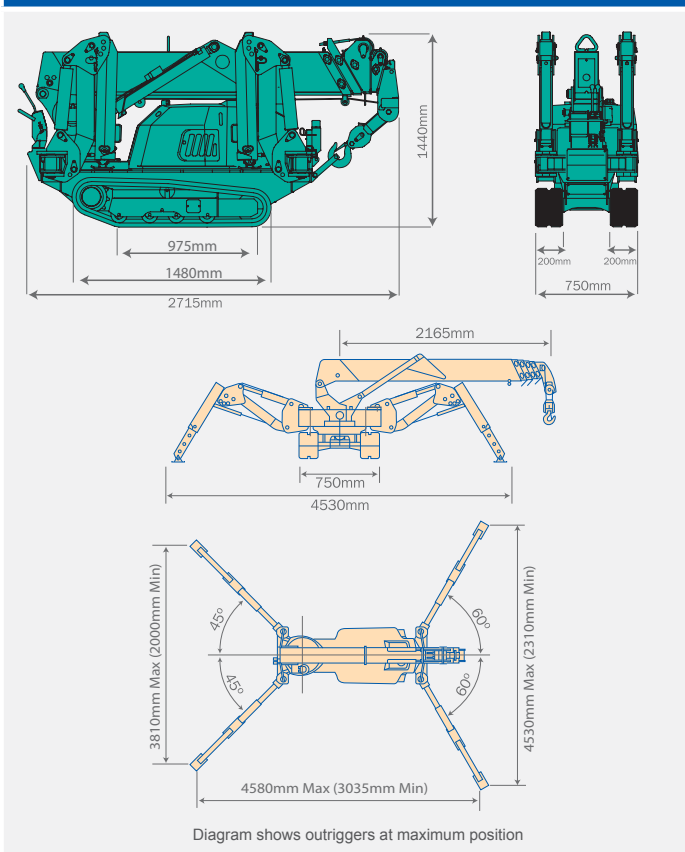
## Total rated load Outriggers at any other position

2.53m/4.075m boom		5.575m boom		7.075m boom		8.575m boom	
Working radius (m)	Total rated load (kg)	Working radius (m)	Total rated load (kg)	Working radius (m)	Total rated load (kg)	Working radius (m)	Total rated load (kg)
< 1.5	1720	< 3.0	510	< 3.6	400	< 4.0	330
2.0	1070	3.5	410	4.0	330	4.5	280
2.5	630	4.0	330	4.5	280	5.0	230
3.0	520	4.5	280	5.0	230	5.5	180
3.5	430	5.0	230	5.5	180	6.0	160
3.705	350	5.205	200	6.0	160	6.5	150
				6.5	150	7.0	100
				6.705	140	7.5	80
						8.0	70
						8.205	60

## Maximum Reach Below Ground Level

Four Fall	Two Fall	Single Fall
10.10m	20.20m	40.40m

## Dimensions



## Working Range Diagram

