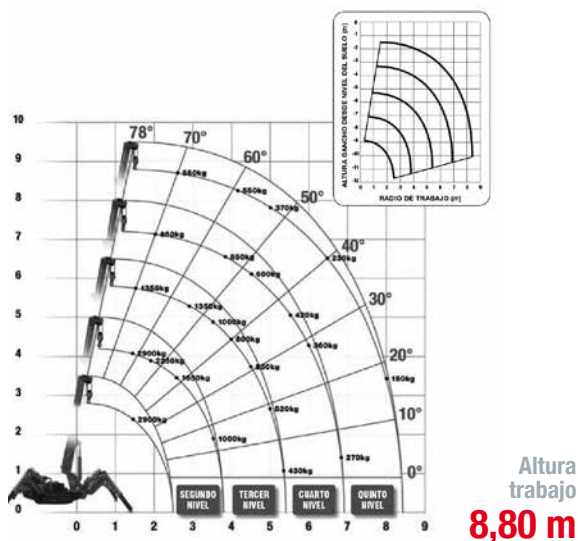


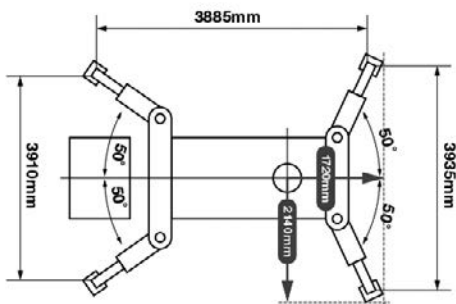
## Mini-Grúas sobre Oruga



Altura trabajo	8,80 m
Capacidad plataforma	2,90 t x 1,40 m
Radio de trabajo	8,41 m
Longitud	2,90 m
Anchura	0,60 m
Altura	1,38 m
Peso	Eléctrica 1.850 Kg / 1.950 Kg
	Diésel 1.920 Kg
	Híbrido 2.090 Kg

NOTA: las dimensiones de algunas unidades de este modelo pueden variar.

### Equipo



# URW-295 (2.9t x 1.4m)

## MINI SPIDER CRANE

- Total width 0.6m
- Max working radius 8.41m
- Petrol powered with LPG and electric options
- Diesel powered with electric option
- Zero length increase with electric option (except diesel)
- Operator control of outrigger extension
- Radio remote control as standard
- Working area limitation
- Slew limitation (optional)
- Intelligent throttle activation for economy and ecology

Max Boom Length 8.65m

Max Lifting Height 8.8m

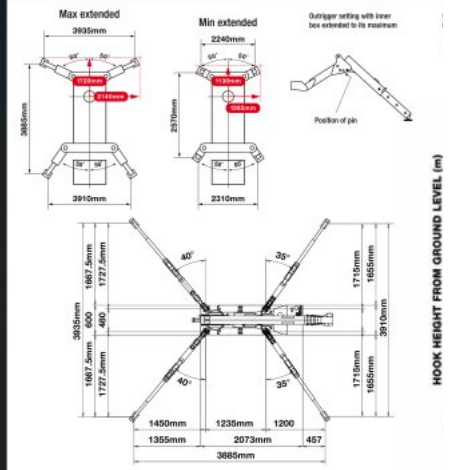
Capacity 2.9t x 1.4m

Weight 1850 - 2090kg  
(Depending on fuel option)



Capacity 700kg  
Length 1500mm  
Weight 40kg  
Tilt angles 0°, 20°, 40°, 60°

### RATED LOADS & OUTRIGGER POSITIONS



The URW-295 is the first mini crane available in Europe narrow enough to allow access through a standard doorframe, but with almost 3 tonnes of lifting power. It also leads the way technically with an array of innovative safety features including a computer-controlled, intelligent voice warning system and the unique UNIC pressure compensation proportional valve, which allows multi-function radio remote control operation.



### CRANE SPECIFICATIONS

Crane capacity	capacity	2.9 x 1.4m
Max working radius	max	8.41m
Max lifting height	approx	8.8m (9.8m with fly jib, 10.47m with fixed hook)
Rope length	max	14.12m (4 fall), 29.24m (2 fall), 59.47m (1 fall)
Dimensions	folded	2690mm (2905mm diesel & electrical dual) (l) x 600mm (w) x 1375mm (h)
Weight	unladen	1850kg (1950kg with electric option, 1920kg with diesel option, 2090kg with diesel and electric dual option)
Point loadings	Due to the many variables involved, point loadings are only available on request	
Hook speed	approx	10m/min (with 4 layers and 4 bits)
Telescopic system	boom length: telescoping speed: boom type:	2.53 - 8.65m 6.12m/20 seconds 5 section hydraulically telescoping boom, hexagonal box construction
Derricking angle/speed	approx	0 - 78°/11 seconds
Steering angle/speed	approx	360° (continuous) 1.5min rpm
Traction system	drive: travel speed: gradability: track ground length: track ground pressure: track width:	hydrostatic, stepless forward and reverse 0 - 2.3km/h 20° 1050mm 48kg (0.49kg/cm²) 180mm
Engine	manufacturer: fuel: maximum output: starting method: tank capacity:	Mitsubishi (Ricardo diesel) petrol with LPG and electric options, diesel with electric option 9.8kW (13PS) / 2000min rpm electric and recoil start as standard 6 litres petrol, 9 litres diesel
Electric motor	power: voltage:	3.7kW 400v AC 50/60Hz
Battery crane option	weight: voltage:	2100kg 48v 3.7kW (AC induction motor with controller and on-board charger)
Standard equipment	computer controlled moment limiter (safe load indicator), radio remote control, overwinding alarm, computer controlled intelligent voice warning system, multi-function operation by radio remote control, intelligent throttle activation, automatic hook slow, overload warning alarms, overload warning lamps, working area limitation	
Optional equipment	1 fall hook block, 2 fall hook block, LPG dual power, mains electric dual power (400v), diesel engine, low marking tracks, slew limitation, searcher hook small 300kg, searcher hook 700kg, fly jib 700kg with single part line, radio remote control with feedback display (with 3300 SL) and data logging	

### ADDITIONAL FEATURES



Radio remote control



Full safe load indicator

<b>SECOND STAGE EXTENDED 2.53 - 4.075M BOOM LENGTH</b>	
Working radius	m up to 1.8 1.4 1.5 1.8 2.0 2.5 3.0 3.0
Outrigger	Max-extended kg 2,900 2,900 2,650 2,250 2,050 1,650 1,300 1
	Min-extended kg 2,000 2,000 2,000 1,450 1,100 650 490 1
<b>THIRD STAGE EXTENDED 4.075 - 5.61M BOOM LENGTH</b>	
Working radius	m up to 2.2 2.5 2.8 3.0 3.5 4.0 4.5 4
Outrigger	Max-extended kg 1,350 1,350 1,350 1,250 1,000 800 650 1
	Min-extended kg 800 650 530 500 380 290 220 1
<b>FOURTH STAGE EXTENDED 5.61 - 7.13M BOOM LENGTH</b>	
Working radius	m up to 3.3 3.8 4.8 4.5 5.0 5.5 6.0 6
Outrigger	Max-extended kg 850 850 750 600 500 420 360 1
	Min-extended kg 420 340 300 250 190 140 100 1
<b>FIFTH STAGE EXTENDED 7.13 - 8.65M BOOM LENGTH</b>	
Working radius	m up to 3.8 4.1 4.5 5.0 5.5 6.0 6.5 1
Outrigger	Max-extended kg 550 550 450 370 310 270 230 1
	Min-extended kg 350 290 250 200 160 130 100 1

### DIMENSIONS

